

For Sale



Woolston

Lot 11, 15 St. Peters Cl,
Cavendish Grove

- 199m² floor area
- 542m² site area
- 3 bedrooms
- 2 living area
- Triple garage
- Double glazing
- Brick cladding
- Heat pump



**HORNCASTLE
HOMES**

www.horncastle.co.nz

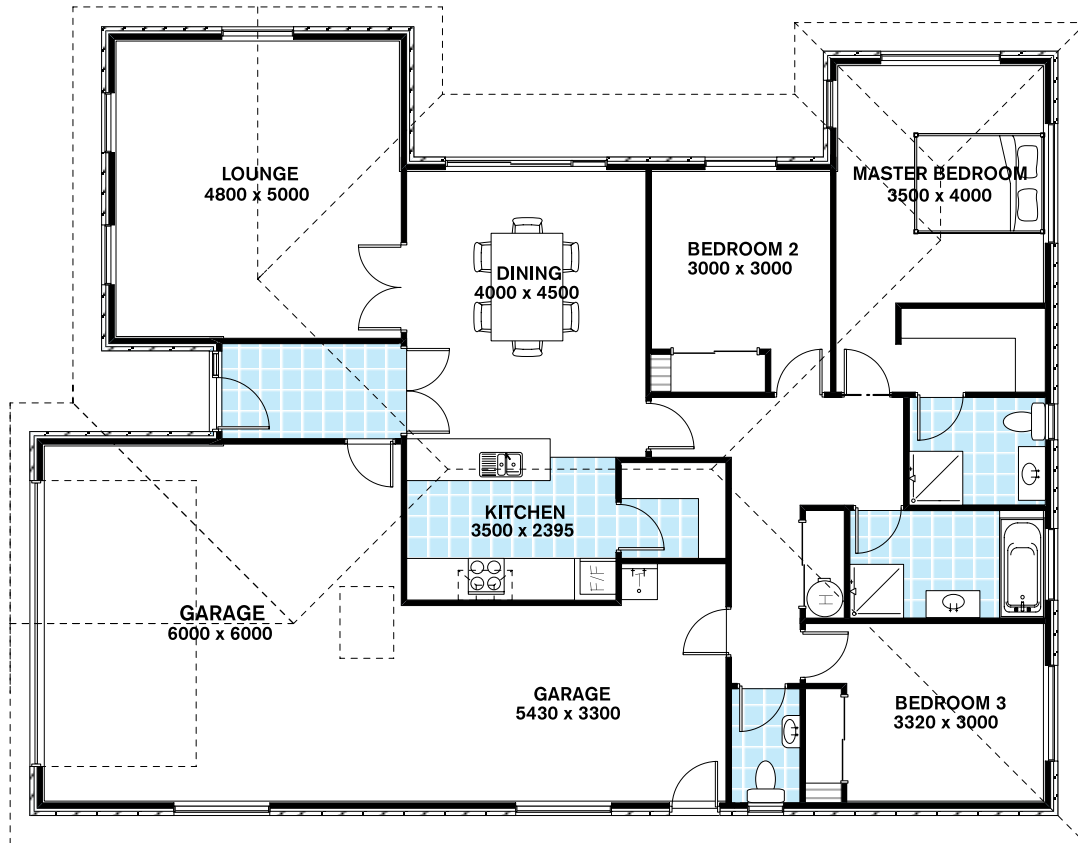
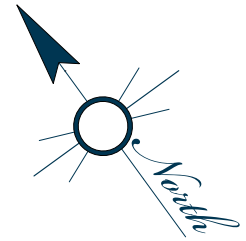
FOR SALE

\$414,000

Go on...unlock your dreams

38 Lowe Street | PO Box 8255 | Riccarton | Christchurch 8440
Telephone: (03) 348 8905 | Fax (03) 348 8906
sales@horncastle.co.nz | www.horncastle.co.nz

Go on... unlock your dreams



FLOOR PLAN

FLOOR AREA 199m²

Floor plan not to scale

HORNCastle HOMES RESERVES THE RIGHT TO CHANGE PRICES WITHOUT NOTICE
PLANS COPYRIGHT OF HORNCastle HOMES LTD



HORNCastle
HOMES



Registered
Master Builder

To view more Turnkey homes visit our website: www.horncastle.co.nz

For more information contact our sales staff:



Simon Davis
027 246 7587



Stephen Pike
027 524 5002



Sandy McLean
027 533 0191